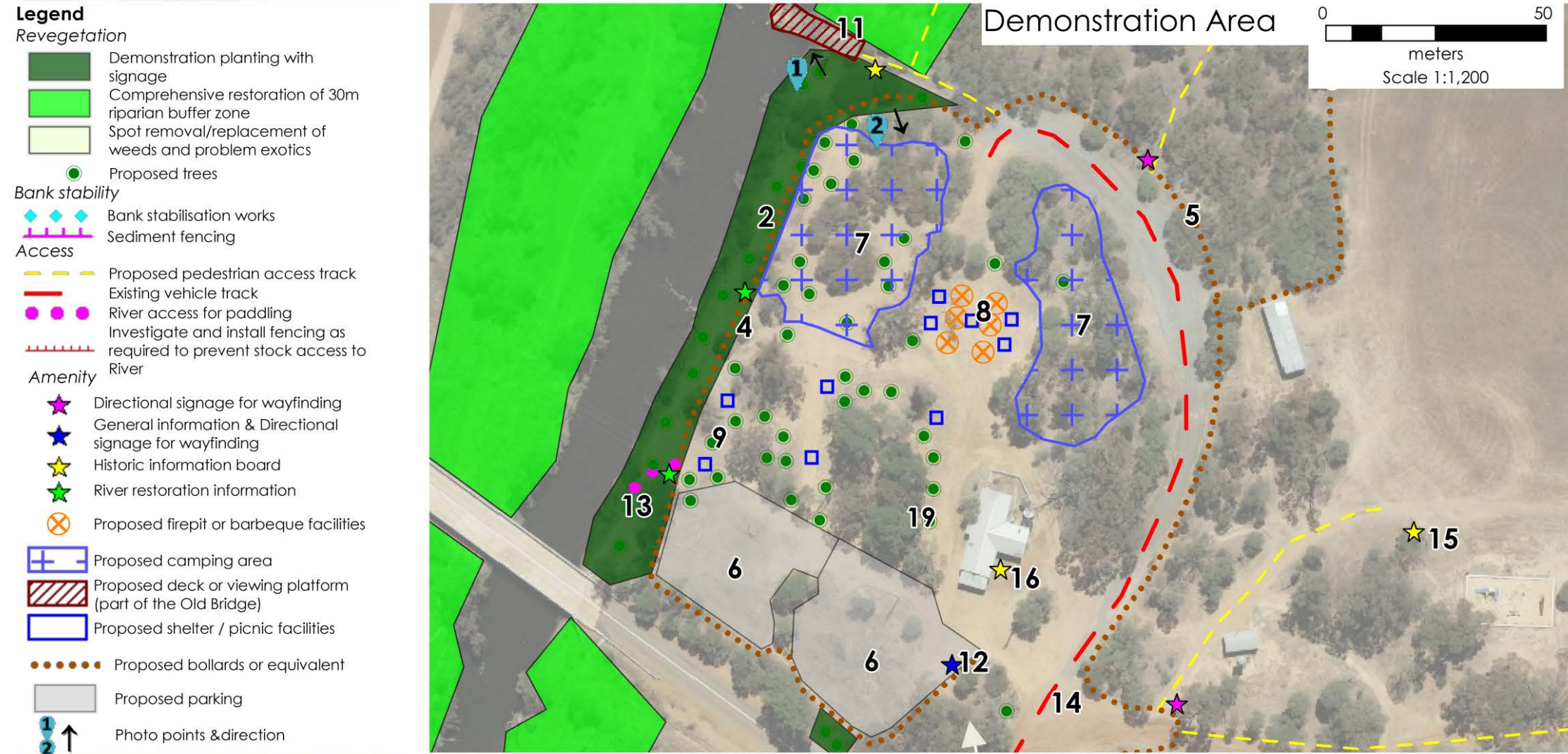
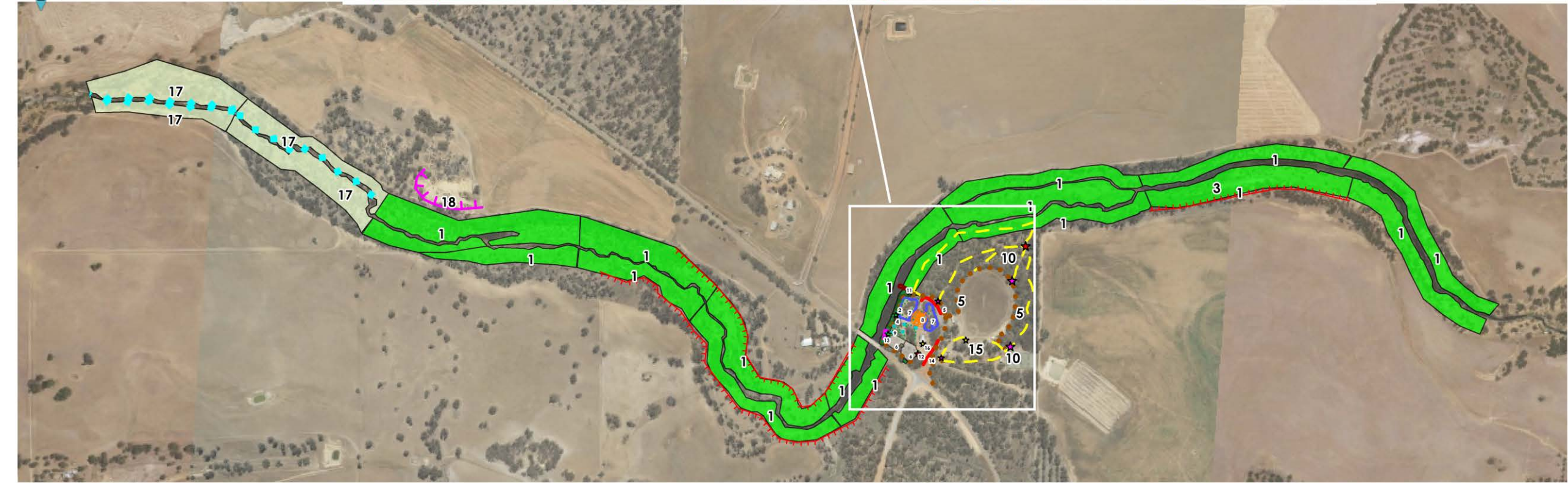


Peel Harvey Catchment Council - Hotham-Williams River Action Plan

Figure 3 - Pumphreys bridge site concept



- Notes:**
- 1 Revegetation – comprehensive weed removal and revegetation of minimum 10m riparian buffer in these areas (30m preferred where tenure and land-use allow).
 - 2 Revegetation – accessible demonstration area for revegetation with higher value species incorporating explanatory signage and trees to improve riparian shading.
 - 3 A cut/diversion in the channel at this location, potentially acting to provide water for stock access should be further investigated and remediated as necessary.
 - 4 Bollards or equivalent to prevent vehicle access to revegetated riverbank.
 - 5 Bollards or equivalent to prevent vehicle access into bush areas.
 - 6 Marked area for day-parking with bollards or equivalent to prevent entry to bush areas.
 - 7 Overnight camping areas with informally marked bays using existing and newly planted trees to create alcoves.
 - 8 Existing cleared area near camping with few trees to be repurposed as firepit or barbecue area with adjacent picnic benches or shelters.
 - 9 Riverside picnic benches or shelters for day use.
 - 10 Mix of formal and marked but informal footpaths connecting camping, river reserve and recreation reserve with wayfinding and signage to provide information on local flora & fauna.
 - 11 Existing remnant bridge deck made safe and repurposed as viewing platform with historic information board.
 - 12 Principal information board with history of bridge/CWA/recreation ground and map of main footpaths and facilities.
 - 13 Existing riverbank headcut widened and stabilised to provide safe entry point for kavaks.
 - 14 Modified vehicle access with clear definition of day-parking and camping areas with bollards and gated entry to prevent uncontrolled access to recreation ground.
 - 15 Restored historic scoreboard.
 - 16 CWA information board.
 - 17 Revegetation – spot removal of weeds and problem exotics, replacement with native species where necessary.
 - 18 Install sediment fencing and groundcover vegetation to improve management of quarry area and prevent wind-borne sediment entering river channel.
 - 19 Trees for increased canopy and amenity and shelters / picnic facility on the river foreshore.



1 Remnants of the old bridge-deck have been left hanging in the river channel and may be unsafe. A structural inspection is recommended to determine how much of the structure can be retained and repurposed (see note 11).



2 Much of the existing reserve has good tree cover but no understory. These areas provide opportunities for shaded camping alcoves (see note 7).

*©2021. While Urbaqua has taken care to ensure the accuracy of this product, Urbaqua and client make no representations or warranties about its accuracy, completeness or suitability for any particular purpose. Urbaqua and client cannot accept liability of any kind (whether in contract, tort or otherwise) for any expenses, losses, damages and/or costs (including indirect or consequential damage) which are or may be incurred as a result of the product being inaccurate, incomplete or unsuitable in any way and for any reason.
Data source: PHCC. Created by:YY Projection: MGA: zone 50.

